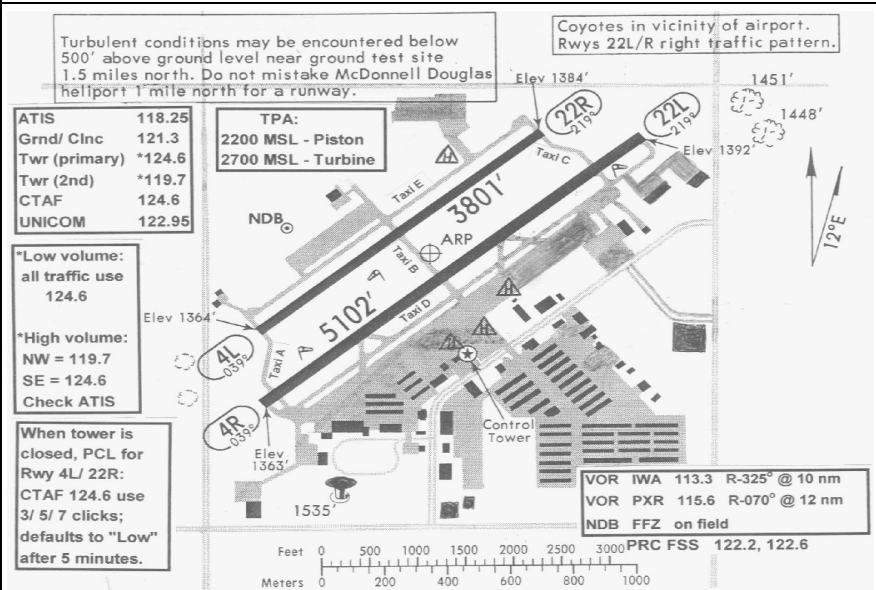
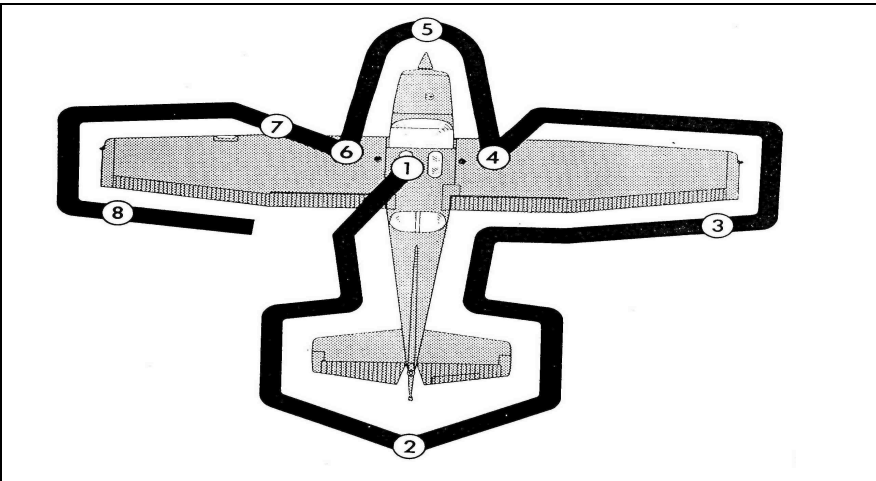


FALCON AVIATION

PREFLIGHT INSPECTION

SKYLANE C-182P/Q



FALCON FIELD INFORMATION

Tower Freq.....124.60 (119.7 2nd)	Phoenix Approach.....120.70
Ground Control.....121.30	Falcon Fuels.....122.95
ATIS.....118.25	FFZ NDB.....281
Elevation.....1394 ft.	Traffic Pattern Altitude...2200 ft.
Falcon Executive Aviation.....(480) 832-0704 or 1-800-237-2359	
Falcon Fuels.....(480) 832-2582	

INTERIOR

Aircraft Documents.....AROW
Control Lock.....REMOVE
Master Switch.....ON
Fuel Qty Indications.....CHECK
All Lights.....CHECK
Flaps.....EXTEND
Pitot Heat (if IFR).....CHECK
Master Switch.....OFF
Ignition Switch.....OFF

EXTERIOR EMPENNAGE

Radio Antennas.....SECURE
Windows.....CLEAR
Baggage Door.....SECURE
Horizontal Stab.....CHECK
Elevator.....FREE MOVEMENT
Vertical Stab.....CHECK
Rudder.....FREE MOVEMENT
Control Cables.....CHECK
Trim Tab.....SECURE
Hinges.....CHECK
ELT Cover Plate.....SECURE

RIGHT WING

Right Fuel Sump.....DRAIN
Right Flap.....CHECK
Right Aileron.....CHECK
Wing.....FREE OF ICE, FROST
Fuel Tank/ Qty/ Cap.....CHECK
Air Inlet.....CLEAR
Right Main Wheel.....INSPECT
Brake Assembly.....CHECK

NOSE

Oil Quantity.....CHECK
Main Fuel Strainer.....DRAIN
Carb Air Inlet.....CLEAR
Propeller...CHECK CONDITION
Spinner.....CHECK CONDITION
Alternator Belt.....SECURE
Cowling Air Inlets.....CLEAR
Nose Tire, Strut.....CHECK
Cowl Flaps.....SECURE
Cowling.....SECURE
Windshield.....CLEAN
Static Port.....CLEAR

LEFT WING

Same Checks As Right Wing
Pitot Tube.....CLEAR
Fuel Vent.....CLEAR
Stall Warning.....CHECK

GENERAL

Condition Of Aircraft.....CHECK
Performance.....COMPUTE
Tiedowns.....RELEASED
Static wicks.....CHECK

FALCON AVIATION

C-182P/ Q Skylane

Vr.....60 KIAS

Vy.....80 Vx.....65

Vs.....48 Vso...45

Vfe...95 Va.....89-110

Vno...143 Vne.179

Best Glide....70 KIAS

BEFORE STARTING

Preflight.....COMPLETE
Passenger Brief.....COMPLETE
Seat Belt/Seat Backs..SECURE
Fuel SelectorBOTH
Cowl Flaps.....OPEN
Pitch/Yaw Trim...SET FOR T.O.
Mixture/Throttle.....RICH/SET
Prop.....HIGH RPM
Carb Heat.....OFF
Flood/Post Lights..AS DESIRED
Elec Equip.....OFF, Beacon ON
Lights.....AS REQUIRED
Circuit Breakers.....CHECK IN
Avionics Master.....OFF
Master Switch.....ON
*Prime only 1st start of the day
1/2 stroke except for COLD start*

STARTING ENGINE

Brakes.....SET
Prop Area.....CLEAR
Ignition Switch.....ENGAGE
RPM.....800-1000
Oil Pressure.....CHECK
Ammeter.....CHECK
Flaps.....0 DEGREES
Mixture.....LEAN FOR TAXI
Suction.....POSITIVE
Avionics Power.....ON
Transponder.....SBY
Lights.....AS REQUIRED

TAXI

Brakes.....CHECK
Controls.....FREE & CORRECT
Flight Instruments.....CHECK

BEFORE TAKEOFF

Parking Brake.....SET
Alt. Static Air.....CHECK
Engine Instruments.....CHECK
Throttle.....1700 RPM
Mixture.....SET
Propeller.....CYCLE 3 TIMES
Carb Heat.....RPM DROP
Magnetos.150 MAX RPM DROP
.....MAX DIFF 50 RPM
Ammeter.....CHECK
Engine Instruments.....CHECK
Suction.....5.0 +/- .5"
Flt. Instruments...CHECK & SET
Throttle.....1000 RPM
Fuel Selector Valve.....BOTH
Elevator/Rudder Trim..TAKEOFF
Circuit Breakers.....CHECK
Comm/Nav.....SET
Transponder.....ALT
Autopilot.....OFF
Elec. Trim.....CHECK
Lights.....AS REQD
Cabin Doors.....CLOSED
Parking Brake.....RELEASE

NORMAL TAKEOFF

Wind.....CHECK
Carb Heat.....OFF
Flaps.....0 DEGREES
Time off.....NOTE
Throttle.....FULL OPEN
Rotate.....60 KIAS
Climb Speed.....80 KIAS

SHORT FIELD T.O.

Carb Heat.....OFF
Flaps.....20 DEGREES
Brakes.....HOLD
Throttle.....FULL OPEN
Rotate.....60 KIAS
Climb.....65 KIAS
Flaps.....SLOWLY RETRACT
Climb.....80 KIAS

SOFT FIELD T.O.

Carb Heat.....OFF
Flaps.....20 DEGREES
Elevator Control.....FULL AFT
Throttle.....OPEN SLOWLY
STAY IN GROUND EFFECT
Obstacle Climb.....65 KIAS
Flaps.....SLOWLY RETRACT
Climb.....80 KIAS

ENROUTE CLIMB

Airspeed.....90 KIAS
Power.....23 INCHES HG
Prop.....2450 RPM
Mixture.....SET FOR CLIMB
Cowl Flaps.....AS REQD
Lights.....AS REQD.

CRUISE

Pitch.....LEVEL
Power.....15 - 23 INCHES Hg
Prop.....2100-2400 RPM
Elevator, Rudder Trim.....SET
Mixture.....SET FOR CRUISE
Cowl Flaps.....AS REQD
Fuel Tanks.....MONITOR

DESCENT APPCH

Fuel Selector.....BOTH
Approach.....REVIEW
Radios/Navs.....SET
Lights.....AS REQD.
Mixture.....ENRICH AS REQD.

BEFORE LANDING

Fuel Selector.....BOTH
Carb Heat.....AS REQD
Throttle.....REDUCE
Propeller.....HIGH RPM
Mixture.....RICH
Flaps.....AS REQD.
Cowl Flaps.....AS REQD
Landing Light.....AS DESIRED
Magnetos.....BOTH
Primer.....IN & LOCKED
Seat/ Belts.....SECURE

LANDING

Flaps....SET BELOW 95 KIAS
Airspeed.....80 KIAS (flaps up)
Airspeed.....70 KIAS (flaps full)

BALKED LANDING

Throttle.....FULL OPEN
Carb Heat.....OFF
Flaps.....RETRACT to 20 DEG
Initial Speed.....60 KIAS
Cowl Flaps.....OPEN

AFTER LANDING

Throttle.....1000 RPM
Radios.....AS REQD.
CLEAR OF RUNWAY...
Transponder.....SBY
Flaps/ Carb Heat.....UP/ OFF
Cowl Flaps.....OPEN
Lights.....AS REQD.

SHUTDOWN

Radios, Elec Equipment....OFF
Throttle.....1000 RPM
Mixture.....IDLE-CUTOFF
Master & Elec Switches....OFF
Ignition Switch.....OFF
Controls.....LOCK
Hobbs/Tach Times.....NOTE
Tie-downs.....SECURE
Flight Plan.....CLOSE

Falcon Aviation

EMERGENCY PROCEDURES

SKYLANE C-182P/ Q

ENGINE FIRE DURING START

Starter.....CONT. CRANKING
Mixture.....IDLE CUTOFF
Throttle.....OPEN
*If engine starts, run per POH
If engine does not start, perform shut down and evacuate*

ENGINE FAILURE DURING TAKEOFF

Airspeed.....70 KIAS
Fuel Selector.....OFF
Flaps.....AS REQD.
Mixture.....IDLE CUTOFF
Ignition Switch.....OFF
Master Switch.....OFF

ENGINE FAILURE INFLIGHT

Airspeed.....70 KIAS
Fuel Selector.....BOTH
Mixture.....RICH
Carb. Heat.....CHECK
Engine Gauges.....CHECK
Ignition Switch.....CYCLE
Primer.....LOCKED

CABIN FIRE INFLIGHT

Vents.....CLOSED
Extinguish As Necessary
VENTS OPEN - CLEAR CABIN
**Land As Soon As Possible*

POWER OFF LANDING

Airspeed.....70 KIAS
Locate Suitable Field
Squawk.....7700
Transmit MAYDAY on 121.5 or nearby ATC facility
Fuel Selector.....OFF
Mixture.....IDLE CUTOFF
Flaps.....AS REQD.
Ignition Switch.....OFF
Passengers.....BRIEF
Belts & Harnesses.....SECURE
Door.....OPEN
When Committed To Landing
Master Switch.....OFF

ENGINE FIRE INFLIGHT

Fuel Selector.....OFF
Mixture.....IDLE CUTOFF
Throttle.....CLOSED
Heater, defroster, vents.....OFF
Increase Airspeed To Vno To Extinguish Fire
Proceed w/ Power Off Landing

ELECTRICAL FIRE INFLIGHT

Master Switch.....OFF
Vents.....CLOSED
Cabin Heat.....OFF
Extinguish As Necessary
VENTS OPEN - CLEAR CABIN
**Turn off all switches on panel
*Investigate Source Of Fire
*Turn on only bare minimum items known to be safe.
Land As Soon As Possible

LOSS OF OIL PRESSURE

*Reduce power, mixture rich
Land as soon as practical
Prepare for Power Off Landing*

HIGH OIL TEMP.

Cowl Flaps.....OPEN
Power.....REDUCE
Mixture.....RICH
Airspeed.....INCREASE
Oil Pressure.....CHECK
*If Oil Temp Continues Rising...
Land As Soon As Practical*

WING FIRE

Nav Lights.....OFF
Pitot Heat.....OFF
Strobe Lights.....OFF
All Wing Lights.....OFF
Perform a side slip to keep flames away from fuel tank.

ELECTRICAL FAILURE

Ammeter.....CHECK
If Ammeter Shows Negative...
ALT Switch.....OFF
Elec.Equip....REDUCE LOAD
ALT Circuit Breaker...CHECK
ALT Switch.....ON
If Power Is Not Restored...
ALT Switch.....OFF
Land As Soon As Practical

ELEC. OVERLOAD

ALT Switch.....OFF
ALT breaker.....PULL
Electrical load.....REDUCE
**Land As Soon As Practical*

FUEL PRESSURE LOSS

Fuel Selector.....BOTH
Mixture.....RICH

SPIN RECOVERY

Throttle.....IDLE
Ailerons/ Elevator.....NEUTRAL
Rudder....FULL OPPOSITE OF DIRECTION OF ROTATION
When Spin Stops...
Rudder.....NEUTRAL
Flaps.....UP
Recover from dive

OPEN DOOR

Airspeed.....90 KIAS
Window.....OPEN
Pull door shut with your arm on outside of door.
Side Latch.....LATCH

ENGINE ROUGHNESS

Carb Heat.....ON
Fuel Selector.....BOTH
Mixture.....ADJUST
Ignition Switch.....CYCLE
Primer.....LOCKED
Engine Gauges.....CHECK
*If Roughness Continues...
Prepare for Power Off Landing*

CARB. ICING

Carb Heat.....ON
Mixture.....PEAK RPM